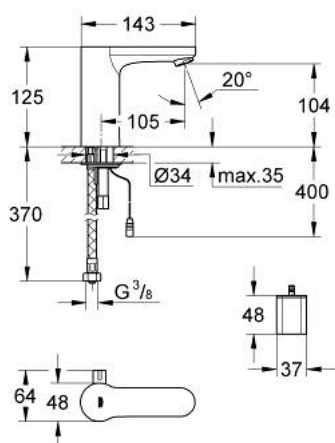


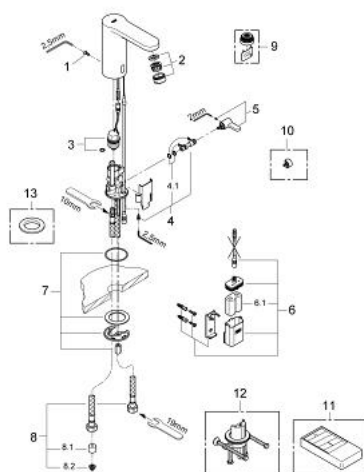
36 327 000 EUROSMART COSMOPOLITAN E INFRA-RED ELECTRONIC BASIN MIXER WITH MIXING DEVICE AND ADJUSTABLE TEMPERATURE LIMITER



PRODUCT DESCRIPTION

- Colour: chrome
- single hole installation
- 6 V lithium battery, type CR-P2
- mixing device with adjustable hot water limiter
- with integrated solenoid valve
- external battery
- multistage battery status display
- flexible connection hoses
- non return valve
- rapid installation system
- 7 pre-set programs:
- with 24/72 hours autoflush
- time or user dependent
- with cleaning mode
- safety stop after 60 sec.
- additional functions by remote control:
- adjustable flow time
- adjustable reflection range by remote
- activation of thermal disinfection for 3.5 or 11 min by hand
- dirt strainers
- noise classification I in accordance with DIN 4109
- type of protection faucet IP 59K
- CE approved
- GROHE Water Saving mousseur 5.7 l/min
- GROHE Long-Life finish
- GROHE Water Saving - Less water, perfect flow
- min. recommended pressure 1.0 bar

36 327 000 EUROSMART COSMOPOLITAN E INFRA-RED ELECTRONIC BASIN MIXER WITH MIXING DEVICE AND ADJUSTABLE TEMPERATURE LIMITER



SPARE PARTS, August 2010 – now

- 1: Screws (Order-nr. 4283100M)
- 2: Mousseur (Order-nr. 42832000)
- 3: Solenoid valve (Order-nr. 42399000)
- 4: Mixer spindle (Order-nr. 42402000)
- 4.1: Sealing washer (Order-nr. 4284000M)
- 5: Mixing lever (Order-nr. 42401000)
- 5.1: Sealing washer (Order-nr. 4284000M)
- 6: Battery housing (Order-nr. 42393000)
- 6.1: Battery (Order-nr. 42886000)
- 7: Mounting set (Order-nr. 42400000)
- 8: Connection hose (Order-nr. 42403000)
- 8.1: Non-return valve (Order-nr. 4240400M)
- 8.2: Filter (Order-nr. 4241300M)
- 9: Mousseur (Order-nr. 36133000)*
- 10: Hidden mixing device (Order-nr. 42408000)*
- 11: Infra-red remote control (Order-nr. 36206000)*
- 12: Rotation lock (Order-nr. 36276000)*
- 13: Escutcheon (Order-nr. 36370000)*

*Special accessories