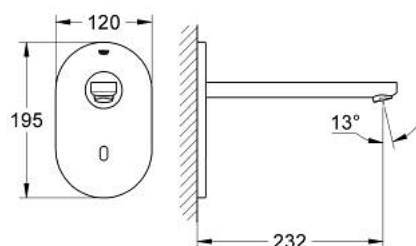


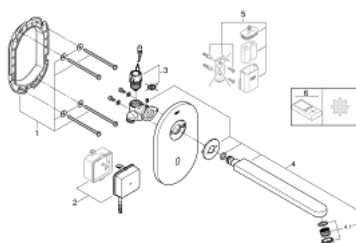
36 334 SD0 EUROSART COSMOPOLITAN E INFRA-RED ELECTRONIC WALL BASIN TAP WITHOUT MIXING DEVICE



PRODUCT DESCRIPTION

- Colour: stainless steel
- with infrared sensor for bi-directional communication for monitoring, configuration and servicing
- for cold or premixed water
- with transformer 100-230 V AC, 50-60 Hz, 6 V DC
- maximum flow rate (at 3 bar): 8 l/min
- stainless steel escutcheon
- SuperSteel spout
- projection 232 mm
- 7 pre-set programs:
 - auto flush
 - thermal disinfection
 - cleaning mode
- additional functions and precise settings by remote control 36 407
- set for final installation for concealed fitting box
- 36 336 001/36 337 001
- CE approved
- noise classification I in accordance with DIN 4109
- min. recommended pressure 1.0 bar

36 334 SD0 EUROSMART COSMOPOLITAN E INFRA-RED ELECTRONIC WALL BASIN TAP WITHOUT MIXING DEVICE



SPARE PARTS, August 2015 – now

- 1: Mounting frame (Order-nr. 42419000)
- 2: Switching power supply (Order-nr. 42470000)
- 3: Solenoid valve (Order-nr. 42469000)
- 4: Spout (Order-nr. 42418DC0)
- 4.1: Laminar flow straightener (Order-nr. 13960000)
- 5: Battery housing (Order-nr. 42393000)*
- 6: Remote control (Order-nr. 36407001)*

*Special accessories