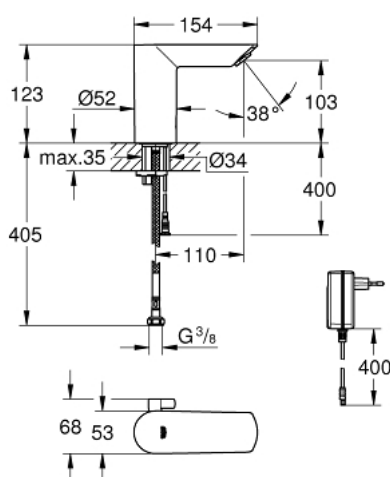


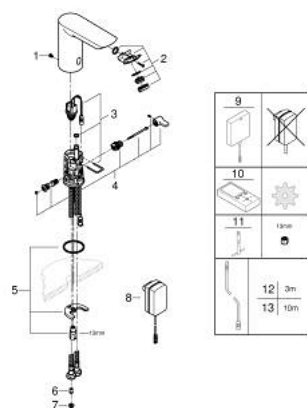
## 36 453 000 **BAU COSMOPOLITAN E INFRA-RED ELECTRONIC BASIN MIXER 1/2"** **WITH MIXING DEVICE AND TEMPERATURE LIMITER**



### PRODUCT DESCRIPTION

- Colour: chrome
- with infrared sensor for bi-directional communication for monitoring, configuration and servicing
- with plug transformer 100-230 V AC, 50-60 Hz, 6 V DC
- GROHE Long-Life finish
- GROHE Water Saving - Less water, perfect flow
- maximum flow rate (at 3 bar): 5 l/min
- Lead and Nickel Free Inner Water Ways
- body made of composite polymer
- flexible connection hoses
- non return valve
- dirt strainers
- with integrated solenoid valve
- rapid installation system
- 7 pre-set programs:
  - auto flush
  - thermal disinfection
  - cleaning mode
- additional functions and precise settings by remote control 36 407
- CE approved
- noise classification I in accordance with DIN 4109
- type of protection faucet IP 59

## 36 453 000 **BAU COSMOPOLITAN E INFRA-RED ELECTRONIC BASIN MIXER 1/2"** **WITH MIXING DEVICE AND TEMPERATURE LIMITER**



### SPARE PARTS, April 2023 – now

- 1: Screws (Order-nr. 4283100M)
- 2: Mousseur (Order-nr. 42582000)
- 3: Solenoid valve (Order-nr. 42479000)
- 4: Mixer spindle with lever (Order-nr. 42581000)
- 5: Shank mounting kit (Order-nr. 46249000)
- 6: Non-return valve (Order-nr. 4257200M)
- 7: Filter (Order-nr. 4241300M)
- 8: Mains adaptor (Order-nr. 42388000)
- 9: Switch-mode power supply (Order-nr. 36338000)\*
- 10: Remote control (Order-nr. 36407001)\*
- 11: Mounting wrench (Order-nr. 19017000)\*
- 12: Power extension cable (Order-nr. 36340000)\*
- 13: Power extension cable (Order-nr. 36341000)\*

\*Special accessories