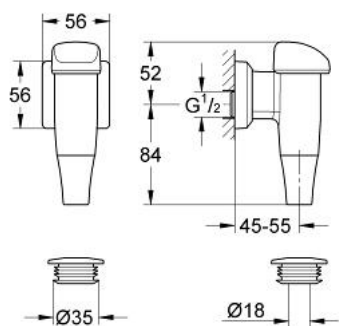


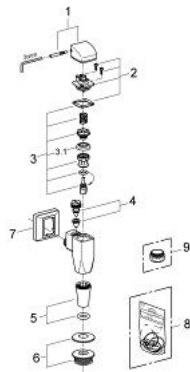
37 023 000 URINAL FLUSH VALVE



PRODUCT DESCRIPTION

- Colour: chrome
- 1/2"
- exposed installation
- with control cap and flush pipe connection
- minimum flow pressure 0.5 bar
- integrated stop valve
- flow rate adjustment
- flush volume adjustable 2.0 - 6.0 l
- brass
- with wall escutcheon
- without flush pipe
- connector
- low noise (group II according to German noise specification)
- in connection with flush pipe and sound absorber
- GROHE Long-Life finish

37 023 000 URINAL FLUSH VALVE



SPARE PARTS, November 2006 – now

- 1: Lever cap (Order-nr. 43052000)
- 2: Cover (Order-nr. 43102000)
- 3: Piston (Order-nr. 43450000)
- 3.1: Sleeve (Order-nr. 4376500M)
- 4: Supply stop (Order-nr. 43393000)
- 5: Nut (Order-nr. 43304000)
- 6: Adapter for urinal (Order-nr. 43818000)
- 7: Escutcheon (Order-nr. 43226000)
- 8: Set of seals (Order-nr. 43715000)*
- 9: Fixing nut (Order-nr. 43310000)*

*Special accessories