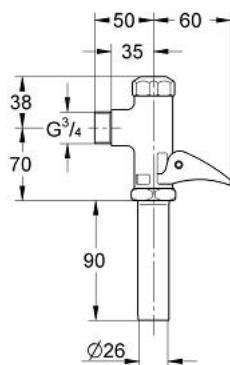


37 143 000 DAL-FULL-AUTOMATIC FLUSH VALVE FOR WC

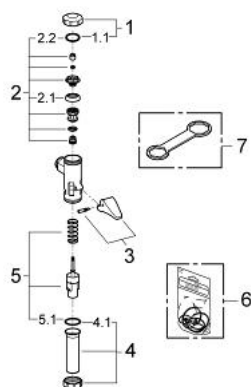


PRODUCT DESCRIPTION

- Colour: chrome
- for seawater use
- exposed installation
- $\frac{3}{4}$ "
- flow pressure range from 1.2 - 5.0 bar
- for wash-down and wash-out bowls
- with automatic flow rate adjustment
- low noise (group II according to German noise specification)
- brass
- GROHE Long-Life finish



37 143 000 DAL-FULL-AUTOMATIC FLUSH VALVE FOR WC



SPARE PARTS, September 1995 – now

- 1: Cover (Order-nr. 43104000)
- 1.1: Seal (Order-nr. 4374700M)
- 2: Piston (Order-nr. 43447000)
- 2.1: Sleeve (Order-nr. 4376400M)
- 3: Lever (Order-nr. 43056000)
- 4: Discharge sleeve (Order-nr. 43318000)
- 4.1: Seal (Order-nr. 4375300M)
- 5: Sleeve (Order-nr. 43453000)
- 5.1: Seal (Order-nr. 4375300M)
- 6: Set of seals (Order-nr. 43707000)*
- 7: Ring spanner (Order-nr. 43786000)*

*Special accessories