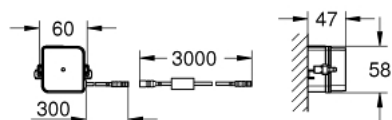


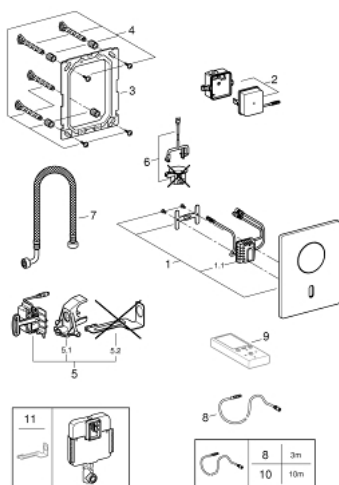
37 419 SD0 TECTRON SKATE INFRA-RED ELECTRONIC FOR WC FLUSHING CISTERN



PRODUCT DESCRIPTION

- Colour: stainless steel
- with additional manual actuation
- with infrared sensor for bi-directional communication for monitoring, configuration and servicing
- with transformer 100-230 V AC, 50-60 Hz, 6 V DC
- for single flush actuation
- for flushing cistern GD 2
- servo motor
- concealed installation
- front plate 156 x 197 mm
- hidden fixing screws
- 7 pre-set programs:
 - auto flush
 - cleaning mode
 - pre-flush on/off
- additional functions and precise settings by remote control 36 407
- adjustable flush (3 - 9 l) by hand and remote
- CE approved
- for use with Rapid SLX please order shaft 66 791 000 (sold separately)

37 419 SD0 TECTRON SKATE INFRA-RED ELECTRONIC FOR WC FLUSHING CISTERN



SPARE PARTS, April 2016 – now

- 1: Top plate with electronic (Order-nr. 42440SD0)
- 1.1: Electronic (Order-nr. 42439000)
- 2: Switching power supply (Order-nr. 42470000)
- 3: Mounting frame (Order-nr. 42736000)
- 4: Fixing set (Order-nr. 4215800M)
- 5: Servo motor (Order-nr. 43281000)
- 5.1: Support device (Order-nr. 42246000)
- 5.2: Motor support device (Order-nr. 43617000)
- 6: Pop-up rod for servo motor (Order-nr. 43306000)
- 7: Hose (Order-nr. 43307000)
- 8: Extension cable (Order-nr. 36221000)
- 9: Remote control (Order-nr. 36407001)*
- 10: Extension cable (Order-nr. 36222000)*
- 11: Motor support device (Order-nr. 43617000)*

*Special accessories