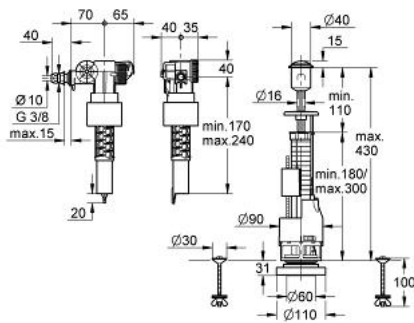


## 37 692 PI0 **ECO-SET**

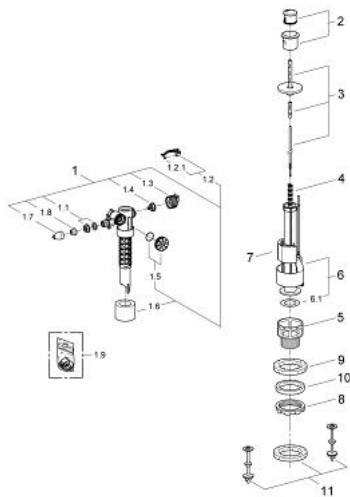


### PRODUCT DESCRIPTION

- Colour: matt chrome/chrome
- retrofit unit for close-coupled flushing cisterns
- filling valve
- dual flush discharge valve
- push button actuation Ø 40 mm with Eco-knob
- fixing set with 100 mm screws and cellular rubber joint Ø 100 mm
- centring for filling and discharge valve when having larger bore holes
- GROHE Long-Life finish
- \*\*) max. shortening 100 mm



## 37 692 PI0 **ECO-SET**



### **SPARE PARTS**, January 1998 – now

- 1: Filling valve (Order-nr. 37095000)
- 2: Push button (Order-nr. 42812PI0)
- 3: Actuation (Order-nr. 42814000)
- 4: Pop-up rod (Order-nr. 42815000)
- 5: Valve seat 50 mm (Order-nr. 42848000)
- 6: Overflow pipe with seal (Order-nr. 42817000)
- 6.1: Seal for Dual Flush discharge valve (Order-nr. 4285200M)
- 7: Float (Order-nr. 42818000)
- 8: Octagon nut (Order-nr. 43311000)
- 9: Seal (Order-nr. 43745000)
- 10: Center ring (Order-nr. 43746000)
- 11: Fixing set (Order-nr. 43500000)