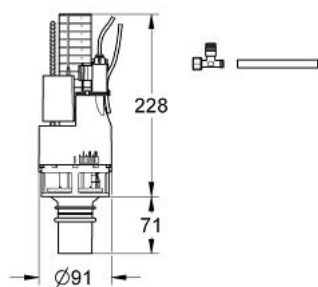


37 801 000 **RETROFIT SET DUAL FLUSH**

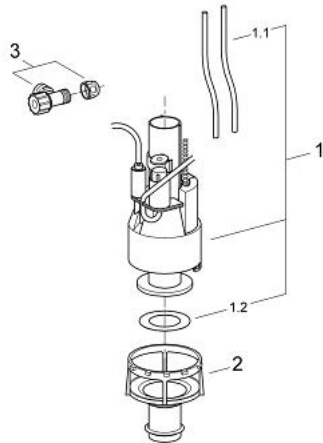


PRODUCT DESCRIPTION

- for flushing cistern 6 l
- concealed installation
- start/stop discharge valve
- including valve seat
- for 6 l or 3 l
- dual flush discharge valve, pneumatic
- angle valve ½"
- guiding pipe for screws
- without flush plate



37 801 000 RETROFIT SET DUAL FLUSH



SPARE PARTS, March 1999 – now

1: Discharge valve, Dual Flush (Order-nr. 42774000)

1.1: Tubes (Order-nr. 42775000)

1.2: Seal for Dual Flush discharge valve (Order-nr. 4285200M)

2: Valve seat for concealed cisterns, Dual Flush (Order-nr. 42773000)

3: Angle valve (Order-nr. 42730000)