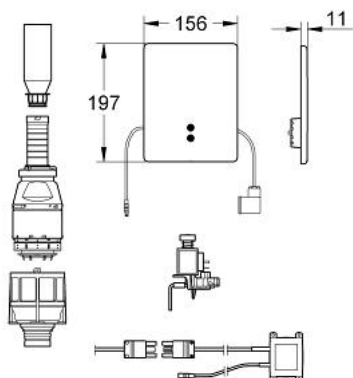


## 38 394 SD0 TECTRON SKATE INFRA-RED ACTUATION

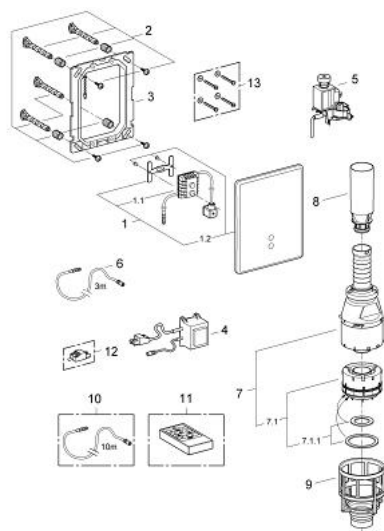


### PRODUCT DESCRIPTION

- Colour: stainless steel
- for flushing cistern GD 2
- concealed installation
- CE approved
- front plate 156 x 197 mm
- infra-red control
- lifting magnet
- transformer for external installation
- operating voltage 230 V AC
- 50/60 Hz, 18.7 VA
- adjustable flow time
- with function check lamps
- adjustable by infra-red control 36 206
- with servo discharge valve
- GROHE Water Saving - Less water, perfect flow



## 38 394 SD0 TECTRON SKATE INFRA-RED ACTUATION



### SPARE PARTS, January 2002 – now

- 1: Flush plate (Order-nr. 42174SD0)
- 1.1: Tectron electronic unit (Order-nr. 42189000)
- 1.2: Flush plate (Order-nr. 42191SD0)
- 2: Fixing set (Order-nr. 4215800M)
- 2: Fixing set (Order-nr. 43095000)
- 3: Mounting frame (Order-nr. 42736000)
- 4: Transformer (Order-nr. 42176000)
- 5: Lifting magnet (Order-nr. 42162000)
- 6: Extension cable (Order-nr. 36221000)
- 7: Servo discharge valve (Order-nr. 42690000)
- 7.1: Outlet piston (Order-nr. 43544000)
- 7.1.1: Seal (Order-nr. 43808000)
- 8: Extension (Order-nr. 42689000)
- 9: Valve seat (Order-nr. 42691000)
- 10: Extension cable (Order-nr. 36222000)\*
- 11: Infra-red remote control (Order-nr. 36206000)\*
- 12: Self anchoring coupling 230 V (Order-nr. 42732000)\*
- 13: Fixing set (Order-nr. 43095000)\*

\*Special accessories