

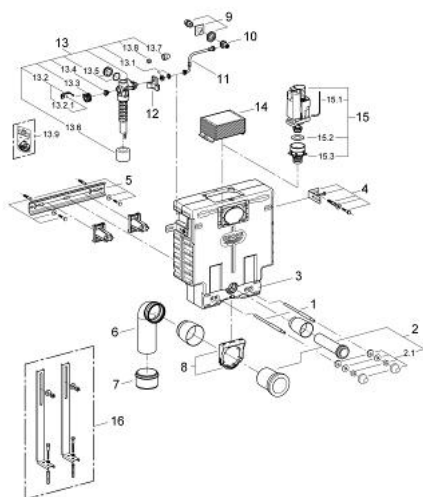
38 415 000 UNISET FOR WC



PRODUCT DESCRIPTION

- with flushing cistern 6 - 9 l
- 0.82 m installation height
- front or top actuation
- sound-insulating EPS module for masonry-in
- rail adaptors for modular fixing
- for single or rail installation
- wall rail with fixing accessories for single installation
- 2 WC fixing bolts
- distance of fixing bolts 180/230 mm
- fixing device for ceramic
- outlet bend Ø 80 mm
- depth adjustable
- inlet and outlet connecting set
- flushing cistern 6 - 9 l
- pneumatic discharge valve offering 3 modes of operation: dual flush or start/stop or single flush
- water supply from left/right or top
- low noise (group I acc. to German Noise Specification)
- insulated against condensation
- 1/2" water supply connection
- angle valve 1/2"
- shortable inspection shaft incl. protection during construction phase
- without flush plate/actuation
- GROHE Water Saving - Less water, perfect flow

38 415 000 UNISET FOR WC



SPARE PARTS, April 2008 – now

- 1: Threaded bolt (Order-nr. 4276400M)
 - 2: WC inlet and outlet connecting set (Order-nr. 37311K00)
 - 2.1: Basin fastening (Order-nr. 43511SH0)
 - 2.2: Connector (Order-nr. 37119000)
 - 3: Cover plate (Order-nr. 43915000)
 - 4: Fastening set, complete, 2 pcs. (Order-nr. 4276300M)
 - 5: Rail (Order-nr. 43931000)
 - 6: PP-outlet bend Ø 90 mm (Order-nr. 42327000)
 - 7: Reducer (Order-nr. 42242000)
 - 8: Support for outlet bend (Order-nr. 42243000)
 - 9: Water supply (Order-nr. 42234000)
 - 10: Angle valve (Order-nr. 42235000)
 - 11: Overflow Sleeve (Order-nr. 43325000)
 - 11.1: Sealing washer (Order-nr. 0319100M)
 - 12: Support device (Order-nr. 42195000)
 - 13: Filling valve (Order-nr. 37095000)
 - 13.1: Lever (Order-nr. 43734000)
 - 13.1.1: Seal (Order-nr. 4377000M)
 - 13.2: Valve head (Order-nr. 43536000)
 - 13.3: Membrane (Order-nr. 4375800M)
 - 13.4: Screw cap (Order-nr. 43735000)
 - 13.5: Valve float, 5 pcs. (Order-nr. 4379100M)
 - 13.6: Set of seals (Order-nr. 43722000)*
 - 14: Inspection shaft for flushing cistern (Order-nr. 42326000)
 - 15: Discharge valve AV1 complete (Order-nr. 42314000)
 - 15.1: Pneumatic hose (Order-nr. 42319000)
 - 15.2: Seal (Order-nr. 42310000)
 - 15.3: Valve seat for GD2 (Order-nr. 42315000)
 - 16: Support feet (Order-nr. 37304000)*
- *Special accessories