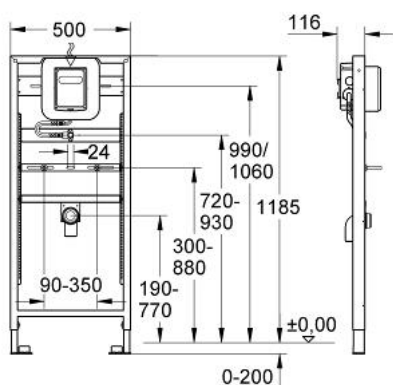


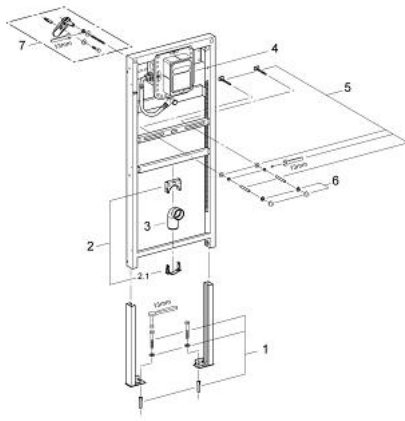
38 513 000 **RAPID SL FOR URINAL**



PRODUCT DESCRIPTION

- roughing-in set for Tectron Skate and Tectron Surf
- 1.20 m installation height
- powder coated steel frame, self-supporting
- for on-the-wall installations or studded walls
- for dry-cladding, completely pre-assembled
- height adjustable fitting connections
- quick adjustment, lockable
- fixing material
- TÜV approved
- HT-outlet bend Ø 50 mm
- inlet connection and inlet connecting set
- fixing bolts M8, with fixing device for ceramic
- box for concealed installation including roughing-in box
- water group with stop valve and flush elbow
- without accessories for on-the-wall installation
- without Tectron electronic, 230 V AC or battery supply 6V DC
- preadjusted for urinal bowl Aller

38 513 000 **RAPID SL FOR URINAL**



SPARE PARTS, June 2003 – now

- 1: Fixing set (Order-nr. 42757000)
- 2: Holder for outlet elbow (Order-nr. 42236000)
- 2.1: Hoop (Order-nr. 42949000)
- 3: Outlet elbow 2" (Order-nr. 42943000)
- 3.1: Holder for outlet elbow (Order-nr. 42236000)
- 4: Urinal flush valve for 37 738 (Order-nr. 42759000)
- 5: Threaded bolt (Order-nr. 43078000)
- 6: Fixation (Order-nr. 4307500M)
- 7: Wall brackets (Order-nr. 3855800M)*

*Special accessories