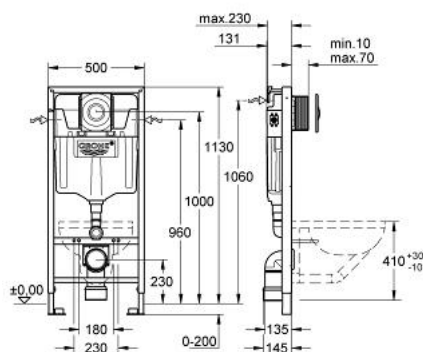


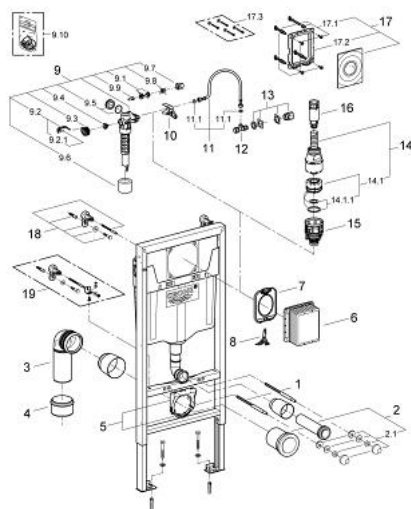
38 531 001 **RAPID SL FOR WC**



PRODUCT DESCRIPTION

- with flushing cistern GD 2, 6 - 9 l
- interruptible flush cycle
- 1.13 m installation height
- for on-the-wall installations or studed walls
- powder coated steel frame, self-supporting
- for dry-cladding, completely pre-assembled
- with fixed connections
- quick adjustment, lockable
- fixing material
- TÜV approved
- 2 WC fixing bolts
- fixing device for ceramic
- distance of fixing bolts 180/230 mm
- outlet bend Ø 80 mm
- depth adjustable
- reducer Ø 80/100 mm
- inlet and outlet connecting set
- flushing cistern GD 2, 6 - 9 l
- water supply from left/right or back
- low noise (group I acc. to German Noise Specification)
- insulated against condensation
- angle valve 1/2"
- water inlet with pipe fixation
- shortable inspection shaft including protection during construction phase, for vertical use
- accessories for on-the-wall installation
- including flush plate Surf 37 063 SH0

38 531 001 RAPID SL FOR WC



SPARE PARTS, August 2008 – now

- 1: Threaded bolt (Order-nr. 4276400M)
- 2: WC inlet and outlet connecting set (Order-nr. 37311K00)
- 2.1: Basin fastening (Order-nr. 43511SH0)
- 2.2: Connector (Order-nr. 37119000)
- 3: PP-outlet bend Ø 90 mm (Order-nr. 42327000)
- 4: Transition piece 90/110 to Rapid SL (Order-nr. 42242000)
- 5: Support for outlet bend (Order-nr. 42243000)
- 6: Inspection shaft (Order-nr. 66791000)
- 7: Protective plate (Order-nr. 42231000)
- 8: Actuation lever (Order-nr. 42674000)
- 9: Filling valve (Order-nr. 37095000)
- 9.1: Lever (Order-nr. 43734000)
- 9.1.1: Seal (Order-nr. 4377000M)
- 9.2: Valve head (Order-nr. 43536000)
- 9.3: Membrane (Order-nr. 4375800M)
- 9.4: Screw cap (Order-nr. 43735000)
- 9.5: Valve float, 5 pcs. (Order-nr. 4379100M)
- 9.6: Set of seals (Order-nr. 43722000)*
- 10: Support device (Order-nr. 42246000)
- 11: Connecting hose (Order-nr. 42233000)
- 11.1: Sealing washer (Order-nr. 0319100M)
- 12: Angle valve (Order-nr. 43821000)
- 13: Water supply pipe connector (Order-nr. 38338000)
- 14: Servo discharge valve (Order-nr. 42690000)
- 14.1: Outlet piston (Order-nr. 43544000)
- 14.1.1: Seal (Order-nr. 43808000)
- 15: Valve seat (Order-nr. 42691000)
- 16: Extension (Order-nr. 42689000)
- 17: Flush plate (Order-nr. 38574000)
- 17.1: Screw (Order-nr. 6636200M)
- 17.2: Mounting frame (Order-nr. 43207000)
- 17.3: Fixing set (Order-nr. 4308500M)*
- 17.4: Fixing set (Order-nr. 4215800M)*
- 18: Wall brackets (Order-nr. 3855800M)
- 19: Xtra wall brackets, flexible placing (Order-nr. 38733000)*

*Special accessories