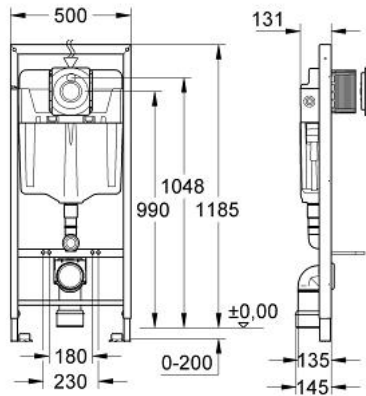


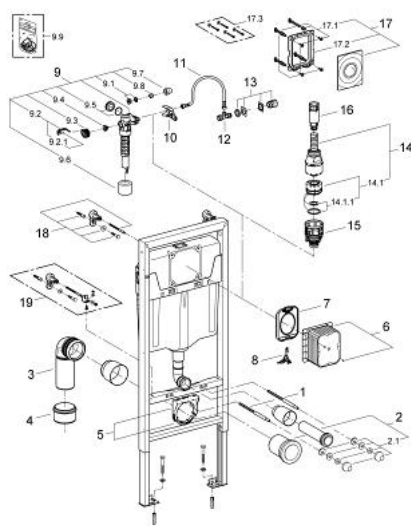
## 38 531 00C **RAPID SL FOR WC**



### PRODUCT DESCRIPTION

- flushing cistern GD 2, 6 - 9 l
- interruptible flush cycle
- 1.20 m installation height
- for on-the-wall installations or studed walls
- powder coated steel frame, self-supporting
- for dry-cladding, completely pre-assembled
- with fixed connections
- quick adjustment, lockable
- fixing material
- TÜV approved
- 2 WC fixing bolts
- fixing device for ceramic
- distance of fixing bolts 180/230 mm
- outlet bend Ø 80 mm
- depth adjustable
- reducer Ø 80/100 mm
- inlet and outlet connecting set
- water supply from left/right/back or top
- low noise (group I acc. to German Noise Specification)
- insulated against condensation
- angle valve ½"
- water inlet with pipe fixation
- shortable inspection shaft including protection during construction phase, for vertical use
- without accessories for on-the-wall installation
- including flush plate Surf 37 063 SH0
- GROHE Water Saving - Less water, perfect flow

## 38 531 00C **RAPID SL FOR WC**



### SPARE PARTS, August 2007 – now

- 1: Fixing set (Order-nr. 42757000)
- 2: Threaded bolt (Order-nr. 4276400M)
- 3: WC inlet and outlet connecting set (Order-nr. 37311K00)
- 3.1: Basin fastening (Order-nr. 43511SH0)
- 3.2: Connector (Order-nr. 37119000)
- 4: PP-outlet bend Ø 90 mm (Order-nr. 42327000)
- 5: Reducer (Order-nr. 42242000)
- 6: Support for outlet bend (Order-nr. 42243000)
- 6.1: Hoop (Order-nr. 42949000)
- 7: Inspection shaft for GD2 in Rapid SL (Order-nr. 42324000)
- 8: Protective plate (Order-nr. 42231000)
- 9: Lid (Order-nr. 42230000)
- 10: Actuation lever (Order-nr. 42674000)
- 11: Filling valve (Order-nr. 37095000)
- 11.1: Lever (Order-nr. 43734000)
- 11.1.1: Seal (Order-nr. 4377000M)
- 11.2: Valve head (Order-nr. 43536000)
- 11.3: Membrane (Order-nr. 4375800M)
- 11.4: Screw cap (Order-nr. 43735000)
- 11.5: Valve float, 5 pcs. (Order-nr. 4379100M)
- 11.6: Set of seals (Order-nr. 43722000)\*
- 12: Support device (Order-nr. 42246000)
- 13: Connecting hose (Order-nr. 42233000)
- 13.1: Sealing washer (Order-nr. 0319100M)
- 14: Angle valve (Order-nr. 42680000)
- 15: Water supply pipe connector (Order-nr. 38338000)
- 16: Servo discharge valve (Order-nr. 42690000)
- 16.1: Outlet piston (Order-nr. 43544000)
- 16.1.1: Seal (Order-nr. 43808000)
- 17: Valve seat (Order-nr. 42691000)
- 18: Extension (Order-nr. 42689000)
- 19: Flush plate (Order-nr. 38574000)
- 19.1: Screw (Order-nr. 6636200M)
- 19.2: Mounting frame (Order-nr. 43207000)
- 19.3: Fixing set (Order-nr. 4308500M)\*
- 19.4: Fixing set (Order-nr. 4215800M)\*
- 19: Flush plate (Order-nr. 38574P00)
- 19.1: Screw (Order-nr. 6636200M)
- 19.2: Mounting frame (Order-nr. 43207000)
- 19.3: Fixing set (Order-nr. 4308500M)\*
- 19.4: Fixing set (Order-nr. 4215800M)\*
- 19: Flush plate (Order-nr. 38574SH0)
- 19.1: Screw (Order-nr. 6636200M)
- 19.2: Mounting frame (Order-nr. 43207000)
- 19.3: Fixing set (Order-nr. 4308500M)\*