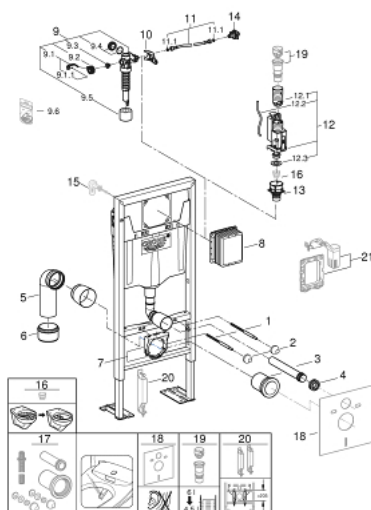


38 584 001 **RAPID SL ELEMENT FOR WC, 1.13 M INSTALLATION HEIGHT**

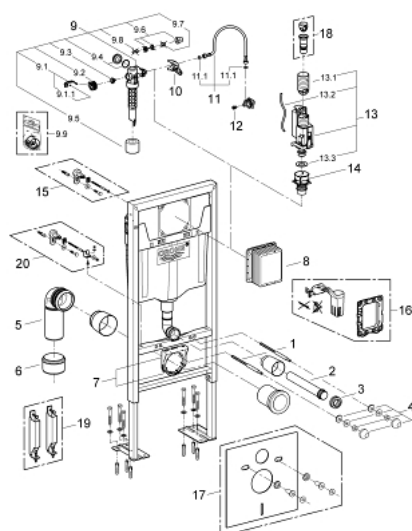


SPARE PARTS, October 2021 – now

- 1: Threaded bolt (Order-nr. 4276400M)
- 2: Basin fastening (Order-nr. 43511SH0)
- 3: Wall union (Order-nr. 43352000)
- 4: Connector (Order-nr. 37119000)
- 5: PP-outlet bend Ø 90 mm (Order-nr. 42327000)
- 6: Transition piece 90/110 to Rapid SL (Order-nr. 42242000)
- 7: Support for outlet bend (Order-nr. 42243000)
- 8: Inspection shaft (Order-nr. 66791000)
- 9: Filling valve (Order-nr. 37095000)
- 9.1: Lever (Order-nr. 43734000)
- 9.1.1: Seal (Order-nr. 4377000M)
- 9.2: Valve head (Order-nr. 43536000)
- 9.3: Membrane (Order-nr. 4375800M)
- 9.4: Screw cap (Order-nr. 43735000)
- 9.5: Valve float, 5 pcs. (Order-nr. 4379100M)
- 9.6: Set of seals (Order-nr. 43722000)*
- 10: Support device (Order-nr. 42246000)
- 11: Connecting hose (Order-nr. 42233000)
- 11.1: Sealing washer (Order-nr. 0319100M)
- 12: Dual Flush discharge valve AV1 (Order-nr. 42320000)
- 12.1: Extension for overflow pipe (Order-nr. 42313000)
- 12.2: Pneumatic hose (Order-nr. 42319000)
- 12.3: Seal (Order-nr. 42310000)
- 13: Valve seat for GD2 (Order-nr. 42315000)
- 14: Water connection (Order-nr. 48561000)
- 15: Wall brackets (Order-nr. 3855800M)*
- 16: Flow restrictor (Order-nr. 42300000)*
- 17: Retrofit kit for shower toilets Sensia Arena and IGS (Order-nr. 40899000)*
- 18: Set for noise protection (Order-nr. 37131000)*
- 19: 4.5 l adapter for GD2 (Order-nr. 42333000)*
- 20: Accessory (Order-nr. 38779000)*
- 21: Retrofit set (Order-nr. 38796000)*

*Special accessories

38 584 001 **RAPID SL ELEMENT FOR WC, 1.13 M INSTALLATION HEIGHT**

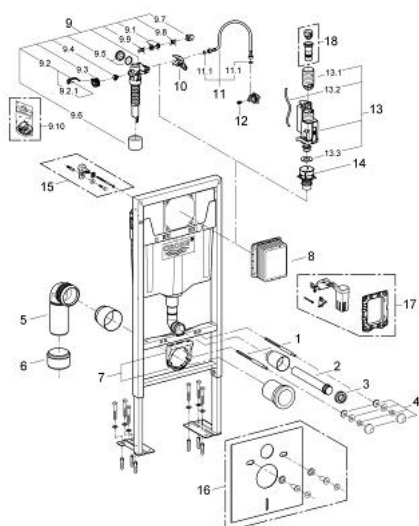


SPARE PARTS, November 2012 – October 2021

- 1: Threaded bolt (Order-nr. 4276400M)
- 2: Wall union (Order-nr. 43352000)
- 3: Connector (Order-nr. 37119000)
- 4: Basin fastening (Order-nr. 43511SH0)
- 5: PP-outlet bend Ø 90 mm (Order-nr. 42327000)
- 6: Transition piece 90/110 to Rapid SL (Order-nr. 42242000)
- 7: Support for outlet bend (Order-nr. 42243000)
- 8: Inspection shaft (Order-nr. 66791000)
- 9: Filling valve (Order-nr. 37095000)
- 9.1: Lever (Order-nr. 43734000)
- 9.1.1: Seal (Order-nr. 4377000M)
- 9.2: Valve head (Order-nr. 43536000)
- 9.3: Membrane (Order-nr. 4375800M)
- 9.4: Screw cap (Order-nr. 43735000)
- 9.5: Valve float, 5 pcs. (Order-nr. 4379100M)
- 9.6: Set of seals (Order-nr. 43722000)*
- 10: Support device (Order-nr. 42246000)
- 11: Connecting hose (Order-nr. 42233000)
- 11.1: Sealing washer (Order-nr. 0319100M)
- 12: Headpart (Order-nr. 42385000)
- 13: Dual Flush discharge valve AV1 (Order-nr. 42320000)
- 13.1: Extension for overflow pipe (Order-nr. 42313000)
- 13.2: Pneumatic hose (Order-nr. 42319000)
- 13.3: Seal (Order-nr. 42310000)
- 14: Valve seat for GD2 (Order-nr. 42315000)
- 15: Wall brackets (Order-nr. 3855800M)*
- 16: Retrofit set (Order-nr. 38796000)*
- 17: Set for noise protection (Order-nr. 37131000)*
- 18: 4.5 l adapter for GD2 (Order-nr. 42333000)*
- 19: Accessory (Order-nr. 38779000)*
- 20: Xtra wall brackets, flexible placing (Order-nr. 38733000)*

*Special accessories

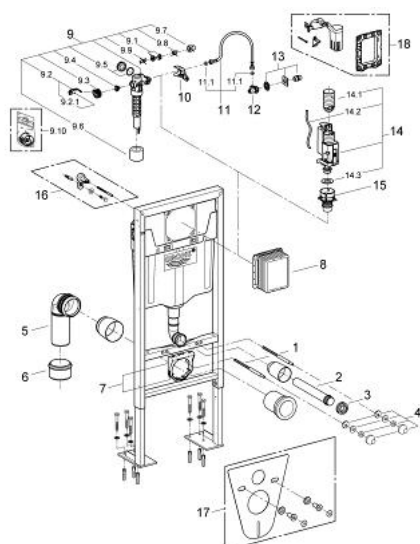
38 584 001 **RAPID SL ELEMENT FOR WC, 1.13 M INSTALLATION HEIGHT**



SPARE PARTS, February 2012 – November 2012

- 1: Threaded bolt (Order-nr. 4276400M)
 - 2: Wall union (Order-nr. 43352000)
 - 3: Connector (Order-nr. 37119000)
 - 4: Basin fastening (Order-nr. 43511SH0)
 - 5: PP-outlet bend Ø 90 mm (Order-nr. 42327000)
 - 6: Transition piece 90/110 to Rapid SL (Order-nr. 42242000)
 - 7: Support for outlet bend (Order-nr. 42243000)
 - 8: Inspection shaft (Order-nr. 66791000)
 - 9: Filling valve (Order-nr. 37095000)
 - 9.1: Lever (Order-nr. 43734000)
 - 9.1.1: Seal (Order-nr. 4377000M)
 - 9.2: Valve head (Order-nr. 43536000)
 - 9.3: Membrane (Order-nr. 4375800M)
 - 9.4: Screw cap (Order-nr. 43735000)
 - 9.5: Valve float, 5 pcs. (Order-nr. 4379100M)
 - 9.6: Set of seals (Order-nr. 43722000)*
 - 10: Support device (Order-nr. 42246000)
 - 11: Connecting hose (Order-nr. 42233000)
 - 11.1: Sealing washer (Order-nr. 0319100M)
 - 12: Headpart (Order-nr. 42385000)
 - 13: Dual Flush discharge valve AV1 (Order-nr. 42320000)
 - 13.1: Extension for overflow pipe (Order-nr. 42313000)
 - 13.2: Pneumatic hose (Order-nr. 42319000)
 - 13.3: Seal (Order-nr. 42310000)
 - 14: Valve seat for GD2 (Order-nr. 42315000)
 - 15: Wall brackets (Order-nr. 3855800M)*
 - 16: Set for noise protection (Order-nr. 37131000)*
 - 17: Retrofit set (Order-nr. 38796000)*
 - 18: 4.5 l adapter for GD2 (Order-nr. 42333000)*
- *Special accessories

38 584 001 **RAPID SL ELEMENT FOR WC, 1.13 M INSTALLATION HEIGHT**



SPARE PARTS, August 2008 – February 2012

- 1: Threaded bolt (Order-nr. 4276400M)
 - 2: Wall union (Order-nr. 43352000)
 - 3: Connector (Order-nr. 37119000)
 - 4: Basin fastening (Order-nr. 43511SH0)
 - 5: PP-outlet bend Ø 90 mm (Order-nr. 42327000)
 - 6: Transition piece 90/110 to Rapid SL (Order-nr. 42242000)
 - 7: Support for outlet bend (Order-nr. 42243000)
 - 8: Inspection shaft (Order-nr. 66791000)
 - 9: Filling valve (Order-nr. 37095000)
 - 9.1: Lever (Order-nr. 43734000)
 - 9.1.1: Seal (Order-nr. 4377000M)
 - 9.2: Valve head (Order-nr. 43536000)
 - 9.3: Membrane (Order-nr. 4375800M)
 - 9.4: Screw cap (Order-nr. 43735000)
 - 9.5: Valve float, 5 pcs. (Order-nr. 4379100M)
 - 9.6: Set of seals (Order-nr. 43722000)*
 - 10: Support device (Order-nr. 42246000)
 - 11: Connecting hose (Order-nr. 42233000)
 - 11.1: Sealing washer (Order-nr. 0319100M)
 - 12: Angle valve (Order-nr. 42235000)
 - 13: Water supply (Order-nr. 42234000)
 - 14: Dual Flush discharge valve AV1 (Order-nr. 42320000)
 - 14.1: Extension for overflow pipe (Order-nr. 42313000)
 - 14.2: Pneumatic hose (Order-nr. 42319000)
 - 14.3: Seal (Order-nr. 42310000)
 - 15: Valve seat for GD2 (Order-nr. 42315000)
 - 16: Wall brackets (Order-nr. 3855800M)*
 - 17: Set for noise protection (Order-nr. 37131000)*
 - 18: Retrofit set (Order-nr. 38796000)*
- *Special accessories