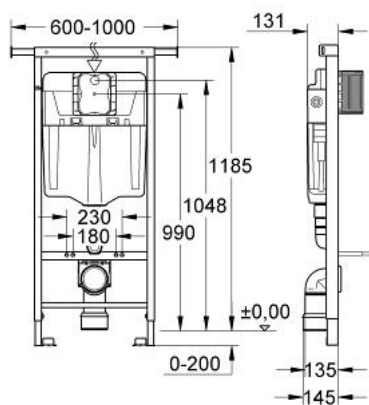


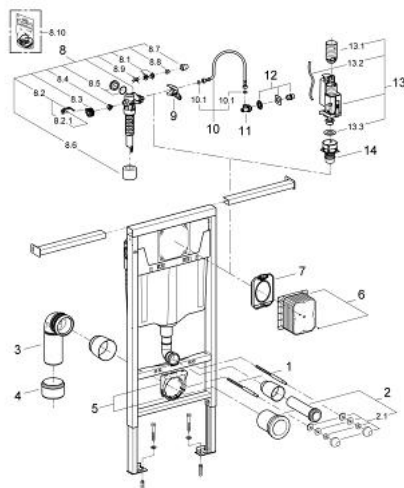
38 588 000 **RAPID SL FOR WC**



PRODUCT DESCRIPTION

- flushing cistern GD 2, 6 - 9 l
- 1.20 m installation height
- for shaft installation 800 - 1100 mm width
- powder coated steel frame, self-supporting
- for dry-cladding, completely pre-assembled
- with fixed connections
- quick adjustment, lockable
- fixing material
- 2 WC fixing bolts
- fixing device for ceramic
- distance of fixing bolts 180/230 mm
- outlet bend Ø 80 mm
- depth adjustable
- reducer Ø 80/100 mm
- inlet and outlet connecting set
- pneumatic discharge valve offering 3 modes of operation: dual flush or start/stop or single flush
- water supply from left/right/back or top
- low noise (group I acc. to German Noise Specification)
- insulated against condensation
- 1/2" water supply connection including integrated angle valve and push fit flexible hose union
- shortable inspection shaft incl. protection during construction phase, for vertical or horizontal use
- without flush plate/actuation
- GROHE Water Saving - Less water, perfect flow

38 588 000 **RAPID SL FOR WC**



SPARE PARTS, January 2008 – now

- 1: Fixing set (Order-nr. 42757000)
 - 2: Threaded bolt (Order-nr. 4276400M)
 - 3: WC inlet and outlet connecting set (Order-nr. 37311K00)
 - 3.1: Basin fastening (Order-nr. 43511SH0)
 - 3.2: Connector (Order-nr. 37119000)
 - 4: PP-outlet bend Ø 90 mm (Order-nr. 42327000)
 - 5: Transition piece 90/110 to Rapid SL (Order-nr. 42242000)
 - 6: Support for outlet bend (Order-nr. 42243000)
 - 6.1: Hoop (Order-nr. 42949000)
 - 7: Inspection shaft for GD2 in Rapid SL (Order-nr. 42324000)
 - 8: Protective plate (Order-nr. 42231000)
 - 9: Filling valve (Order-nr. 37095000)
 - 9.1: Lever (Order-nr. 43734000)
 - 9.1.1: Seal (Order-nr. 4377000M)
 - 9.2: Valve head (Order-nr. 43536000)
 - 9.3: Membrane (Order-nr. 4375800M)
 - 9.4: Screw cap (Order-nr. 43735000)
 - 9.5: Valve float, 5 pcs. (Order-nr. 4379100M)
 - 9.6: Set of seals (Order-nr. 43722000)*
 - 10: Support device (Order-nr. 42246000)
 - 11: Connecting hose (Order-nr. 42233000)
 - 11.1: Sealing washer (Order-nr. 0319100M)
 - 12: Angle valve (Order-nr. 42235000)
 - 13: Water supply (Order-nr. 42234000)
 - 14: Dual Flush discharge valve AV1 (Order-nr. 42320000)
 - 14.1: Extension for overflow pipe (Order-nr. 42313000)
 - 14.2: Pneumatic hose (Order-nr. 42319000)
 - 14.3: Seal (Order-nr. 42310000)
 - 15: Valve seat for GD2 (Order-nr. 42315000)
- *Special accessories