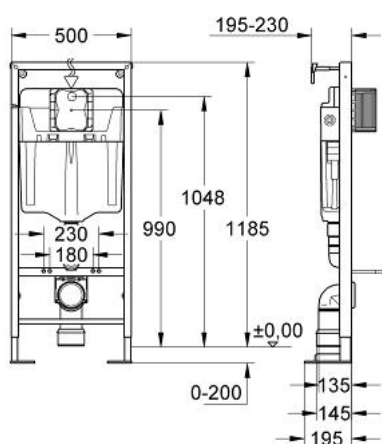


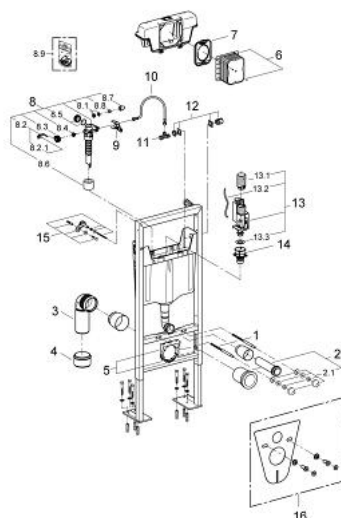
38 620 000 **RAPID SL FOR WC**



PRODUCT DESCRIPTION

- flushing cistern GD 2, 6 - 9 l
- 1.20 m installation height
- for free-standing installation, for on-the-wall installations or studded walls
- powder coated steel frame, self-supporting
- for dry-cladding, completely pre-assembled
- with fixed connections
- lockable
- fixing material
- 2 WC fixing bolts
- fixing device for ceramic
- distance of fixing bolts 180/230 mm
- outlet bend Ø 80 mm
- depth adjustable
- inlet and outlet connecting set
- pneumatic discharge valve offering 3 modes of operation: dual flush or start/stop or single flush
- water supply from left/right/back or top
- low noise (group I acc. to German Noise Specification)
- insulated against condensation
- angle valve 1/2"
- water inlet with pipe fixation
- shortable inspection shaft incl. protection during construction phase, for vertical or horizontal use
- accessories for on-the-wall installation
- without flush plate/actuation
- GROHE Water Saving - Less water, perfect flow

38 620 000 **RAPID SL FOR WC**



SPARE PARTS, June 2008 – now

- 1: Threaded bolt (Order-nr. 4276400M)
 - 2: Wall union (Order-nr. 43352000)
 - 3: Connector (Order-nr. 37119000)
 - 4: Basin fastening (Order-nr. 43511SH0)
 - 5: PP-outlet bend Ø 90 mm (Order-nr. 42327000)
 - 6: Transition piece 90/110 to Rapid SL (Order-nr. 42242000)
 - 7: Support for outlet bend (Order-nr. 42243000)
 - 8: Inspection shaft for GD2 in Rapid SL (Order-nr. 42324000)
 - 9: Protective plate (Order-nr. 42231000)
 - 10: Filling valve (Order-nr. 37095000)
 - 10.1: Lever (Order-nr. 43734000)
 - 10.1.1: Seal (Order-nr. 4377000M)
 - 10.2: Valve head (Order-nr. 43536000)
 - 10.3: Membrane (Order-nr. 4375800M)
 - 10.4: Screw cap (Order-nr. 43735000)
 - 10.5: Valve float, 5 pcs. (Order-nr. 4379100M)
 - 10.6: Set of seals (Order-nr. 43722000)*
 - 11: Support device (Order-nr. 42246000)
 - 12: Connecting hose (Order-nr. 42233000)
 - 12.1: Sealing washer (Order-nr. 0319100M)
 - 13: Angle valve (Order-nr. 43821000)
 - 14: Water supply pipe connector (Order-nr. 38338000)
 - 15: Dual Flush discharge valve AV1 (Order-nr. 42320000)
 - 15.1: Extension for overflow pipe (Order-nr. 42313000)
 - 15.2: Pneumatic hose (Order-nr. 42319000)
 - 15.3: Seal (Order-nr. 42310000)
 - 16: Valve seat for GD2 (Order-nr. 42315000)
 - 17: Wall brackets (Order-nr. 3855800M)
 - 18: Set for noise protection (Order-nr. 37131000)*
- *Special accessories