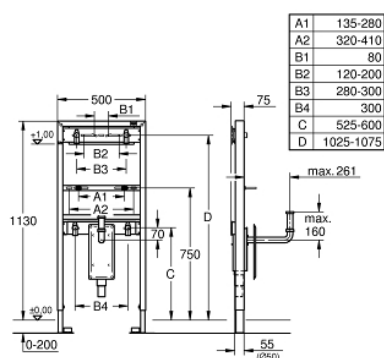


38 625 001 **RAPID SL ELEMENT FOR WASH BASIN WITH CONCEALED TRAP**



PRODUCT DESCRIPTION

- for single hole installation or wall mounted fittings
- 1.13 m installation height
- with concealed trap Ø 50 mm
- for on-the-wall installations or studed walls
- powder coated steel frame, self-supporting
- for dry-cladding, completely pre-assembled
- with fixed connections
- single installation or fitting to a rail
- quick adjustment, lockable
- fixing material
- TÜV approved
- wash basin fixing bolts M10 with fixing device for ceramic
- variable distance of fixing bolts
- 2 noise protected fitting connections 1/2"
- concealed syphon
- for concealed wall installation
- including cover plate for concealed trap, stainless steel
- including adjustable brass outlet bend
- chrome plated
- height adjustable
- for on-the-wall installation please order wall brackets 38 558 00M (sold separately)



38 625 001 **RAPID SL ELEMENT FOR WASH BASIN WITH CONCEALED TRAP**

SPARE PARTS, August 2008 – now

1: Threaded bolt (Order-nr. 42247000)

2: Wall brackets (Order-nr. 3855800M)*

*Special accessories

