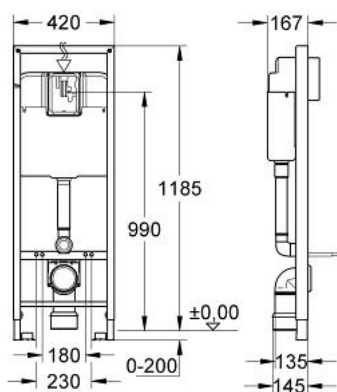


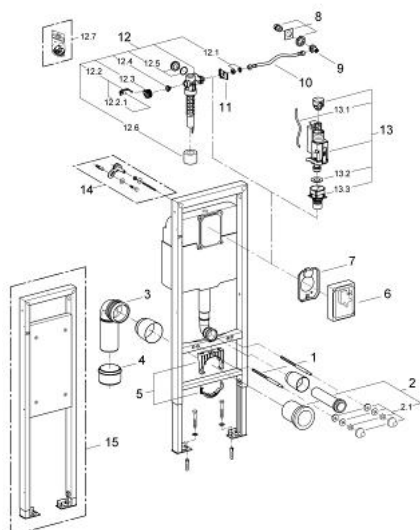
## 38 713 000 **RAPID SL FOR WC**



### PRODUCT DESCRIPTION

- flushing cistern 6 l
- 1.20 m installation height
- 0.42 m wide
- for on-the-wall installations or studded walls
- powder coated steel frame, self-supporting
- for dry-cladding, completely pre-assembled
- with fixed connections
- quick adjustment, lockable
- fixing material
- 2 WC fixing bolts
- fixing device for ceramic
- distance of fixing bolts 180/230 mm
- outlet bend Ø 80 mm
- depth adjustable
- reducer Ø 80/100 mm
- inlet and outlet connecting set
- pneumatic discharge valve offering 3 modes of operation: dual flush or start/stop or single flush
- water supply from left/right/back or top
- low noise (group I acc. to German Noise Specification)
- insulated against condensation
- 1/2" water supply connection including integrated angle valve and push fit flexible hose union
- without accessories for on-the-wall installation
- without flush plate/actuation
- GROHE Water Saving - Less water, perfect flow

## 38 713 000 **RAPID SL FOR WC**



### **SPARE PARTS**, June 2008 – now

- 1: Threaded bolt (Order-nr. 4276400M)
- 2: WC inlet and outlet connecting set (Order-nr. 37311K00)
- 2.1: Basin fastening (Order-nr. 43511SH0)
- 2.2: Connector (Order-nr. 37119000)
- 3: PP-outlet bend Ø 90 mm (Order-nr. 42327000)
- 4: Transition piece 90/110 to Rapid SL (Order-nr. 42242000)
- 5: Support for outlet bend (Order-nr. 42243000)
- 6: Protection cap (Order-nr. 43944000)
- 7: Protective plate (Order-nr. 43552000)
- 8: Water supply (Order-nr. 42234000)
- 9: Angle valve (Order-nr. 42235000)
- 10: Hose (Order-nr. 43349000)
- 11: Support device (Order-nr. 43551000)
- 12: Filling valve (Order-nr. 43537000)
- 12.1: Dummy plug and escutcheon cap (Order-nr. 37125000)
- 12.2: Lever (Order-nr. 43734000)
- 12.2.1: Seal (Order-nr. 4377000M)
- 12.3: Valve head (Order-nr. 43536000)
- 12.4: Membrane (Order-nr. 4375800M)
- 12.5: Screw cap (Order-nr. 43735000)
- 12.6: Valve float, 5 pcs. (Order-nr. 4379100M)
- 12.7: Throttle (Order-nr. 42356000)
- 12.8: Set of seals (Order-nr. 43722000)\*
- 13: Dual Flush discharge valve AV1 (Order-nr. 66558000)
- 13.1: Pneumatic hose (Order-nr. 42319000)
- 13.2: Seal (Order-nr. 42310000)
- 13.3: Valve seat for GD2 (Order-nr. 42315000)
- 14: Wall brackets (Order-nr. 3855800M)\*
- 15: Rapid SL fixing element (Order-nr. 38559000)\*

\*Special accessories