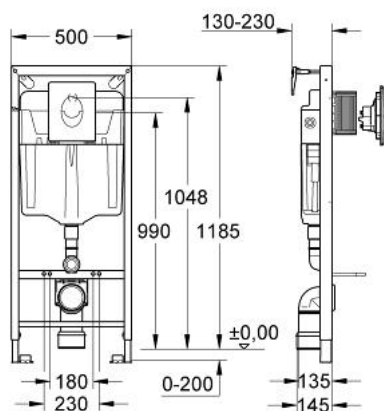


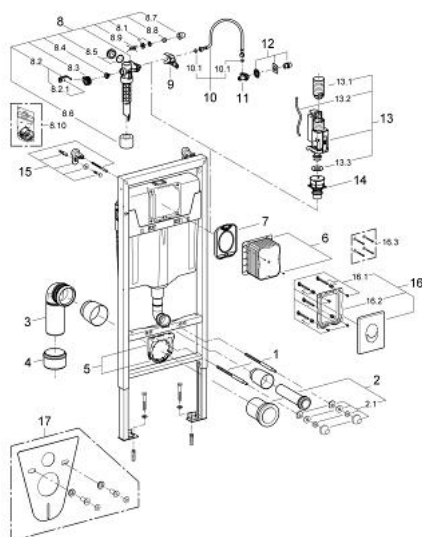
38 721 000 **RAPID SL 3-IN-1 SET FOR WC**



PRODUCT DESCRIPTION

- flushing cistern GD 2, 6 - 9 l
- 1.20 m installation height
- for on-the-wall installations or studed walls
- powder coated steel frame, self-supporting
- for dry-cladding, completely pre-assembled
- with fixed connections
- quick adjustment, lockable
- fixing material
- TÜV approved
- 2 WC fixing bolts
- fixing device for ceramic
- distance of fixing bolts 180/230 mm
- outlet bend Ø 80 mm
- depth adjustable
- reducer Ø 80/100 mm
- inlet and outlet connecting set
- pneumatic discharge valve offering 3 modes of operation: dual flush or start/stop or single flush
- water supply from left/right/back or top
- low noise (group I acc. to German Noise Specification)
- insulated against condensation
- ½" water supply connection including integrated angle valve and push fit flexible hose union
- shortable inspection shaft incl. protection during construction phase, for vertical or horizontal use
- including flush plate Skate Air
- vertical installation
- 156 x 197 mm
- chrome
- made of ABS
- 2 wall brackets with fixing material
- GROHE Water Saving - Less water, perfect flow

38 721 000 **RAPID SL 3-IN-1 SET FOR WC**



SPARE PARTS, August 2007 – now

- 1: Fixing set (Order-nr. 42757000)
- 2: Threaded bolt (Order-nr. 4276400M)
- 3: WC inlet and outlet connecting set (Order-nr. 37311K00)
- 3.1: Basin fastening (Order-nr. 43511SH0)
- 3.2: Connector (Order-nr. 37119000)
- 4: PP-outlet bend Ø 90 mm (Order-nr. 42327000)
- 5: Reducer (Order-nr. 42242000)
- 6: Support for outlet bend (Order-nr. 42243000)
- 6.1: Hoop (Order-nr. 42949000)
- 7: Flushing cistern GD 2 (Order-nr. 38661000)
- 8: Inspection shaft for GD2 in Rapid SL (Order-nr. 42324000)
- 9: Wall brackets (Order-nr. 3855800M)
- 10: Flush plate (Order-nr. 38505000)
- 10.1: Screw (Order-nr. 6636200M)
- 10.2: Mounting frame (Order-nr. 43207000)
- 10.3: Fixing set (Order-nr. 4308500M)*
- 10.4: Fixing set (Order-nr. 4215800M)*
- 11: Set for noise protection (Order-nr. 37131000)*

*Special accessories