

38 784 SD0 **SKATE COSMOPOLITAN FLUSH PLATE, STAINLESS STEEL**

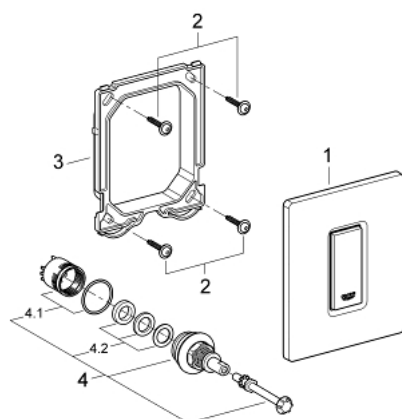


PRODUCT DESCRIPTION

- Colour: stainless steel
- manual activation for urinal
- set for final installation
- for Rapido U or Rapido UMB
- 116 x 144 mm
- mechanical functional cartridge
- flow pressure min 0.5 bar
- operating pressure max 6 bar
- 1.0 - 6.0 l adjustable
- low noise (group II according to German noise specification)
- plastic fixing frame
- hidden fixing screws



38 784 SD0 **SKATE COSMOPOLITAN FLUSH PLATE, STAINLESS STEEL**



SPARE PARTS, March 2012 – now

- 1: Top plate with push button (Order-nr. 42377SD0)
- 2: Screw (Order-nr. 6636200M)
- 3: Mounting frame (Order-nr. 66845000)
- 4: Cartridge (Order-nr. 42354000)
- 4.1: Seal kit (Order-nr. 4271500M)
- 4.2: Rings (Order-nr. 4282000M)