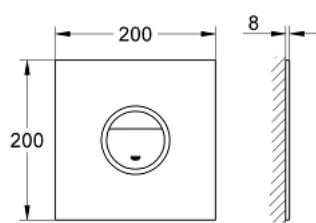


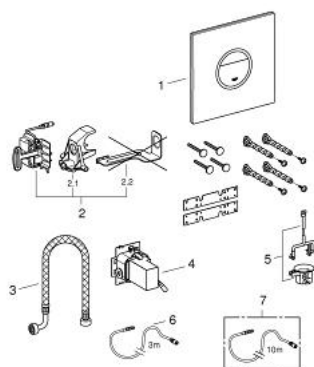
38 915 LS0 GROHE ONDUS DIGITECTURE LIGHT FLUSH PLATE



PRODUCT DESCRIPTION

- Colour: moon white
- for dual flush or start & stop actuation
- for SoftTouch flushing activation
- external highlighted outline
- with LEDs in blue, red, yellow, green
- light colour individually adjustable
- on/off timer for individual regulation of illuminating period
- 3 m connecting cable
- transformer for external installation
- servo motor
- 110 V to 240 V 50/60 Hz broad range power supply
- 9 VA
- CE approved
- with function check lamps
- for GD 2 cisterns with pneumatic discharge valve AV1
- 200 x 200 mm
- made of security glass
- GROHE Water Saving - Less water, perfect flow
- not suitable for GROHE Fresh

38 915 LS0 GROHE ONDUS DIGITECTURE LIGHT FLUSH PLATE



SPARE PARTS, August 2010 – now

- 1: Top plate with electronic (Order-nr. 42427LS0)
- 2: Servo motor (Order-nr. 43281000)
- 2.1: Support device (Order-nr. 42246000)
- 2.2: Motor support device (Order-nr. 43617000)
- 3: Hose (Order-nr. 43307000)
- 4: Plug power supply 110-240 V (Order-nr. 36078000)
- 5: Pop-up rod for servo motor (Order-nr. 43306000)
- 6: Extension cable (Order-nr. 36221000)
- 7: Extension cable (Order-nr. 36222000)*
- *Special accessories