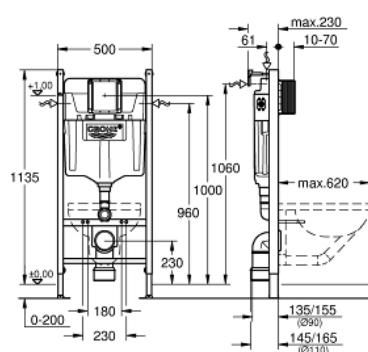


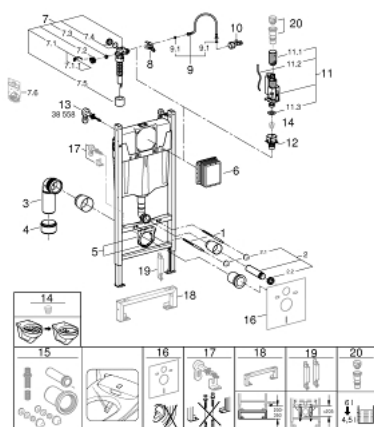
38 971 000 **SOLIDO 2-IN-1 SET FOR WC, 1.13 M INSTALLATION HEIGHT**

## PRODUCT DESCRIPTION

- flushing cistern GD 2, 6 - 9 l
- consisting of:
- Solido Compact element for WC (38 939 000)
- 2 wall brackets with fixing material



## 38 971 000 **SOLIDO 2-IN-1 SET FOR WC, 1.13 M INSTALLATION HEIGHT**



### **SPARE PARTS**, November 2024 – now

- 1: Threaded bolt (Order-nr. 4276400M)
- 2: WC inlet and outlet connecting set (Order-nr. 37311K00)
- 2.1: Basin fastening (Order-nr. 43511SH0)
- 2.2: Connector (Order-nr. 37119000)
- 3: PP-outlet bend Ø 90 mm (Order-nr. 42327000)
- 4: Transition piece 90/110 to Rapid SL (Order-nr. 42242000)
- 5: Support for outlet bend (Order-nr. 42243000)
- 6: Inspection shaft (Order-nr. 66791000)
- 7: Filling valve (Order-nr. 42583000)
- 7.1: Lever (Order-nr. 43734000)
- 7.1.1: Seal (Order-nr. 4377000M)
- 7.2: Valve head (Order-nr. 43536000)
- 7.3: Membrane (Order-nr. 4375800M)
- 7.4: Screw cap (Order-nr. 43735000)
- 7.5: Valve float, 5 pcs. (Order-nr. 4379100M)
- 7.6: Set of seals (Order-nr. 43722000)\*
- 8: Support device (Order-nr. 42246000)
- 9: Connecting hose (Order-nr. 42233000)
- 9.1: Sealing washer (Order-nr. 0319100M)
- 10: Water connection (Order-nr. 48561000)
- 11: Dual Flush discharge valve AV1 (Order-nr. 42320000)
- 11.1: Extension for overflow pipe (Order-nr. 42313000)
- 11.2: Pneumatic hose (Order-nr. 42319000)
- 11.3: Seal (Order-nr. 42310000)
- 12: Valve seat (Order-nr. 42599000)
- 13: Wall brackets (Order-nr. 3855800M)
- 14: Flow restrictor (Order-nr. 42300000)\*
- 15: Retrofit kit for shower toilets Sensia Arena and IGS (Order-nr. 40899000)\*
- 16: Set for noise protection (Order-nr. 37131000)\*
- 17: Xtra wall brackets, flexible placing (Order-nr. 38733000)\*
- 18: Extension (Order-nr. 38629000)\*
- 19: Accessory (Order-nr. 38779000)\*
- 20: 4.5 l adapter for GD2 (Order-nr. 42333000)\*

\*Special accessories