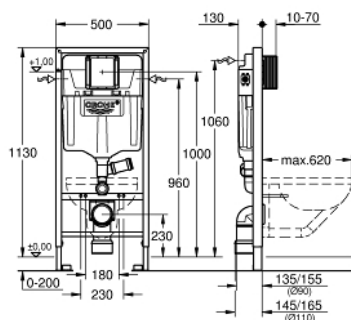


## A white Grohe bidet toilet unit is shown, featuring a control panel with various buttons and a large red circular opening at the bottom. The unit is mounted on a blue metal frame.



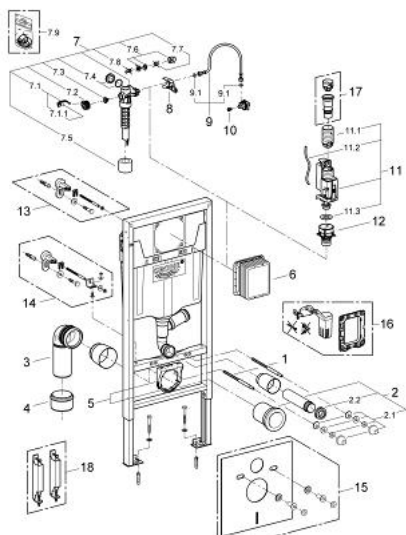
- with flushing cistern GD 2, 6 - 9 l
- with flush pipe for external odour extraction
- for on-the-wall installations or studded walls
- powder coated steel frame, self-supporting
- for dry-cladding, completely pre-assembled
- with fixed connections
- quick adjustment, lockable
- fixing material
- TÜV approved
- 2 WC fixing bolts
- fixing device for ceramic
- WC ceramics with small bearing area (less than 205 mm) require additional accessory 38 779 000
- distance of fixing bolts 180/230 mm
- PP outlet bend Ø 90 mm
- depth adjustable
- PP reducer Ø 90/110 mm
- inlet and outlet connecting set
- flushing cistern GD 2, 6 - 9 l, containing following features:
- adjustment ex factory 6 l and 3 l
- flush pipe with connection for odor extraction 50 mm
- pneumatic discharge valve offering 3 modes of operation: dual flush or start/stop or single flush
- water supply from left/right or back
- low noise (group I acc. to German Noise Specification)
- insulated against condensation
- ½" water supply connection including integrated angle valve and push fit flexible hose union
- no tools required for the installation of the inspection shaft including protection during construction phase
- for vertical or horizontal use
- for on-the-wall installation please order wall brackets 38 558 00M (sold separately)

## 39 002 000 **RAPID SL ELEMENT FOR WC, 1.13 M INSTALLATION HEIGHT, WITH EXTERNAL ODOUR EXTRACTION**

### **PRODUCT DESCRIPTION** (2/2)

- for mounting of small flush plates please order revision shaft 40 911 000 (sold separately)
- for installation in Scandinavia please order adapter 38 338 000 (sold separately)

## 39 002 000 **RAPID SL ELEMENT FOR WC, 1.13 M INSTALLATION HEIGHT, WITH EXTERNAL ODOUR EXTRACTION**



### SPARE PARTS, November 2012 – now

- 1: Threaded bolt (Order-nr. 4276400M)
- 2: WC inlet and outlet connecting set (Order-nr. 37311K00)
- 2.1: Basin fastening (Order-nr. 43511SH0)
- 2.2: Connector (Order-nr. 37119000)
- 3: PP-outlet bend Ø 90 mm (Order-nr. 42327000)
- 4: Reducer (Order-nr. 42242000)
- 5: Support for outlet bend (Order-nr. 42243000)
- 6: Inspection shaft (Order-nr. 66791000)
- 7: Filling valve (Order-nr. 37095000)
- 7.1: Lever (Order-nr. 43734000)
- 7.1.1: Seal (Order-nr. 4377000M)
- 7.2: Valve head (Order-nr. 43536000)
- 7.3: Membrane (Order-nr. 4375800M)
- 7.4: Screw cap (Order-nr. 43735000)
- 7.5: Valve float, 5 pcs. (Order-nr. 4379100M)
- 7.6: Set of seals (Order-nr. 43722000)\*
- 8: Support device (Order-nr. 42246000)
- 9: Connecting hose (Order-nr. 42233000)
- 9.1: Sealing washer (Order-nr. 0319100M)
- 10: Headpart (Order-nr. 42385000)
- 11: Dual Flush discharge valve AV1 (Order-nr. 42320000)
- 11.1: Extension for overflow pipe (Order-nr. 42313000)
- 11.2: Pneumatic hose (Order-nr. 42319000)
- 11.3: Seal (Order-nr. 42310000)
- 12: Valve seat for GD2 (Order-nr. 42315000)
- 13: Wall brackets (Order-nr. 3855800M)\*
- 14: Xtra wall brackets, flexible placing (Order-nr. 38733000)\*
- 15: Set for noise protection (Order-nr. 37131000)\*
- 16: Retrofit set (Order-nr. 38796000)\*
- 17: 4.5 l adapter for GD2 (Order-nr. 42333000)\*
- 18: Accessory (Order-nr. 38779000)\*

\*Special accessories