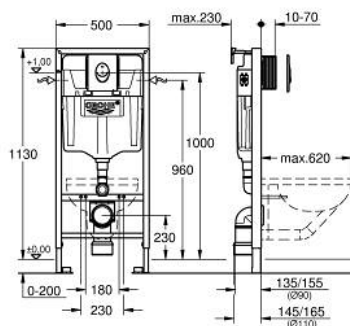


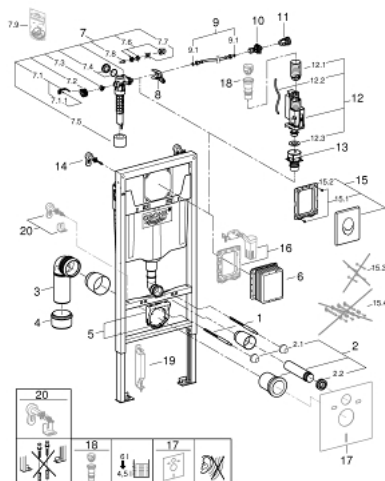
## 39 108 000 **RAPID SL 3-IN-1 SET FOR WC, 1.13 M INSTALLATION HEIGHT**

### PRODUCT DESCRIPTION

- Colour: chrome
- consisting of:
  - Rapid SL element for WC (38 528 001)
  - Skate Air flush plate, chrome, vertical installation (38 505 000)
  - wall brackets (38 558 00M)
  - including Scandinavian adapter 38 338 000



## 39 108 000 **RAPID SL 3-IN-1 SET FOR WC, 1.13 M INSTALLATION HEIGHT**



### SPARE PARTS, September 2013 – now

- 1: Threaded bolt (Order-nr. 4276400M)
  - 2: WC inlet and outlet connecting set (Order-nr. 37311K00)
  - 2.1: Basin fastening (Order-nr. 43511SH0)
  - 2.2: Connector (Order-nr. 37119000)
  - 3: PP-outlet bend Ø 90 mm (Order-nr. 42327000)
  - 4: Transition piece 90/110 to Rapid SL (Order-nr. 42242000)
  - 5: Support for outlet bend (Order-nr. 42243000)
  - 6: Inspection shaft (Order-nr. 66791000)
  - 7: Filling valve (Order-nr. 37095000)
  - 7.1: Lever (Order-nr. 43734000)
  - 7.1.1: Seal (Order-nr. 4377000M)
  - 7.2: Valve head (Order-nr. 43536000)
  - 7.3: Membrane (Order-nr. 4375800M)
  - 7.4: Screw cap (Order-nr. 43735000)
  - 7.5: Valve float, 5 pcs. (Order-nr. 4379100M)
  - 7.6: Set of seals (Order-nr. 43722000)\*
  - 8: Support device (Order-nr. 42246000)
  - 9: Connecting hose (Order-nr. 42397000)
  - 9.1: Sealing washer (Order-nr. 0319100M)
  - 10: Angle valve (Order-nr. 42396000)
  - 11: Water supply pipe connector (Order-nr. 38338000)
  - 12: Dual Flush discharge valve AV1 (Order-nr. 42320000)
  - 12.1: Extension for overflow pipe (Order-nr. 42313000)
  - 12.2: Pneumatic hose (Order-nr. 42319000)
  - 12.3: Seal (Order-nr. 42310000)
  - 13: Valve seat for GD2 (Order-nr. 42315000)
  - 14: Wall brackets (Order-nr. 3855800M)
  - 15: Flush plate (Order-nr. 38505000)
  - 15.1: Screw (Order-nr. 6636200M)
  - 15.2: Mounting frame (Order-nr. 43207000)
  - 15.3: Fixing set (Order-nr. 4308500M)\*
  - 15.4: Fixing set (Order-nr. 4215800M)\*
  - 16: Retrofit set (Order-nr. 38796000)\*
  - 17: Set for noise protection (Order-nr. 37131000)\*
  - 18: 4.5 l adapter for GD2 (Order-nr. 42333000)\*
  - 19: Accessory (Order-nr. 38779000)\*
  - 20: Xtra wall brackets, flexible placing (Order-nr. 38733000)\*
- \*Special accessories