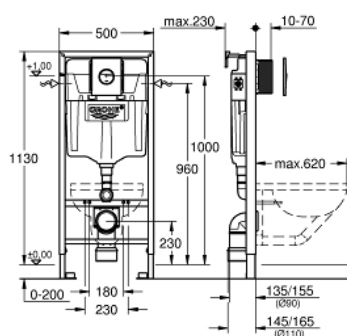


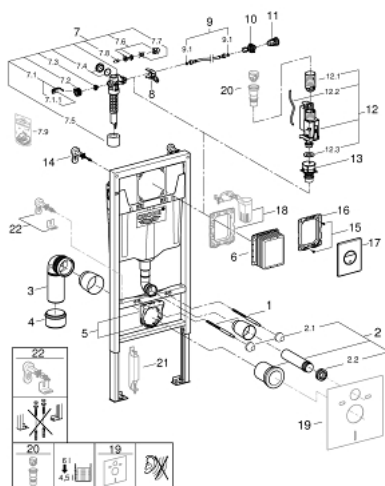
39 189 000 **RAPID SL 3-IN-1 SET FOR WC, 1.13 M INSTALLATION HEIGHT**

PRODUCT DESCRIPTION

- Colour: chrome
- with flushing cistern 6 - 9 l
- consisting of:
 - Rapid SL element for WC (38 528 001)
 - Nova Cosmopolitan flush plate, chrome (38 765 000)
 - wall brackets (38 558 00M)



39 189 000 **RAPID SL 3-IN-1 SET FOR WC, 1.13 M INSTALLATION HEIGHT**



SPARE PARTS, November 2014 – now

- 1: Threaded bolt (Order-nr. 4276400M)
- 2: WC inlet and outlet connecting set (Order-nr. 37311K00)
- 2.1: Basin fastening (Order-nr. 43511SH0)
- 2.2: Connector (Order-nr. 37119000)
- 3: PP-outlet bend Ø 90 mm (Order-nr. 42327000)
- 4: Reducer (Order-nr. 42242000)
- 5: Support for outlet bend (Order-nr. 42243000)
- 6: Inspection shaft (Order-nr. 66791000)
- 7: Filling valve (Order-nr. 37095000)
- 7.1: Lever (Order-nr. 43734000)
- 7.1.1: Seal (Order-nr. 4377000M)
- 7.2: Valve head (Order-nr. 43536000)
- 7.3: Membrane (Order-nr. 4375800M)
- 7.4: Screw cap (Order-nr. 43735000)
- 7.5: Valve float, 5 pcs. (Order-nr. 4379100M)
- 7.6: Set of seals (Order-nr. 43722000)*
- 8: Support device (Order-nr. 42246000)
- 9: Connecting hose (Order-nr. 42397000)
- 9.1: Sealing washer (Order-nr. 0319100M)
- 10: Angle valve (Order-nr. 42396000)
- 11: Water supply pipe connector (Order-nr. 38338000)
- 12: Dual Flush discharge valve AV1 (Order-nr. 42320000)
- 12.1: Extension for overflow pipe (Order-nr. 42313000)
- 12.2: Pneumatic hose (Order-nr. 42319000)
- 12.3: Seal (Order-nr. 42310000)
- 13: Valve seat for GD2 (Order-nr. 42315000)
- 14: Wall brackets (Order-nr. 3855800M)
- 15: Screw (Order-nr. 6636200M)
- 16: Mounting frame (Order-nr. 43207000)
- 17: Top plate with push button (Order-nr. 42375000)
- 18: Retrofit set (Order-nr. 38796000)*
- 19: Set for noise protection (Order-nr. 37131000)*
- 20: 4.5 l adapter for GD2 (Order-nr. 42333000)*
- 21: Accessory (Order-nr. 38779000)*
- 22: Xtra wall brackets, flexible placing (Order-nr. 38733000)*

*Special accessories