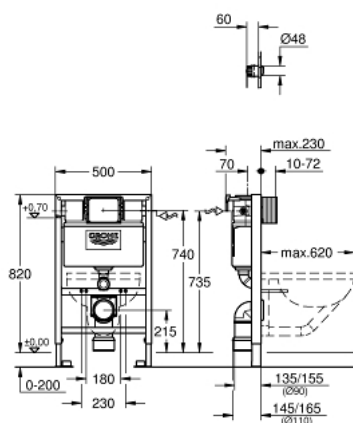


39 455 000 **RAPID SL 3-IN-1 SET FOR WC, 0.82 M INSTALLATION HEIGHT**

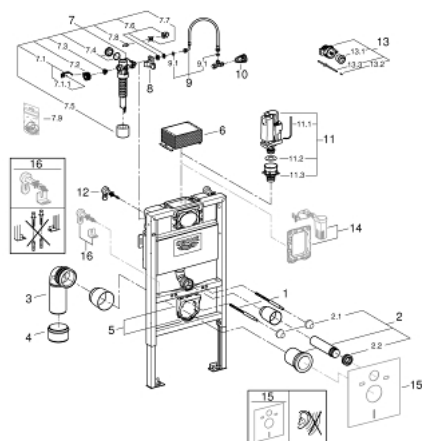


PRODUCT DESCRIPTION

- consisting of:
- Rapid SL element for WC (38 526 000)
- wall brackets (38 558 00M)
- including Scandinavian adapter 38 338 000



39 455 000 **RAPID SL 3-IN-1 SET FOR WC, 0.82 M INSTALLATION HEIGHT**



SPARE PARTS, March 2018 – now

- 1: Threaded bolt (Order-nr. 4276400M)
- 2: WC inlet and outlet connecting set (Order-nr. 37311K00)
- 2.1: Basin fastening (Order-nr. 43511SH0)
- 2.2: Connector (Order-nr. 37119000)
- 3: PP-outlet bend Ø 90 mm (Order-nr. 42327000)
- 4: Transition piece 90/110 to Rapid SL (Order-nr. 42242000)
- 5: Support for outlet bend (Order-nr. 42243000)
- 6: Inspection shaft for flushing cistern (Order-nr. 42326000)
- 7: Filling valve (Order-nr. 37095000)
- 7.1: Lever (Order-nr. 43734000)
- 7.1.1: Seal (Order-nr. 4377000M)
- 7.2: Valve head (Order-nr. 43536000)
- 7.3: Membrane (Order-nr. 4375800M)
- 7.4: Screw cap (Order-nr. 43735000)
- 7.5: Valve float, 5 pcs. (Order-nr. 4379100M)
- 7.6: Set of seals (Order-nr. 43722000)*
- 8: Support device (Order-nr. 42195000)
- 9: Overflow Sleeve (Order-nr. 43325000)
- 9.1: Sealing washer (Order-nr. 0319100M)
- 10: Water supply pipe connector (Order-nr. 38338000)
- 11: Discharge valve AV1 complete (Order-nr. 42314000)
- 11.1: Pneumatic hose (Order-nr. 42319000)
- 11.2: Seal (Order-nr. 42310000)
- 11.3: Valve seat for GD2 (Order-nr. 42315000)
- 12: Wall brackets (Order-nr. 3855800M)
- 13: Pneumatic push button actuation (Order-nr. 38771000)
- 13.1: Push button and escutcheon (Order-nr. 42311PI0)
- 13.2: Nipple (Order-nr. 4227100M)
- 13.3: Tubes (Order-nr. 42775000)
- 14: Retrofit set (Order-nr. 38796000)*
- 15: Set for noise protection (Order-nr. 37131000)*
- 16: Xtra wall brackets, flexible placing (Order-nr. 38733000)*

*Special accessories