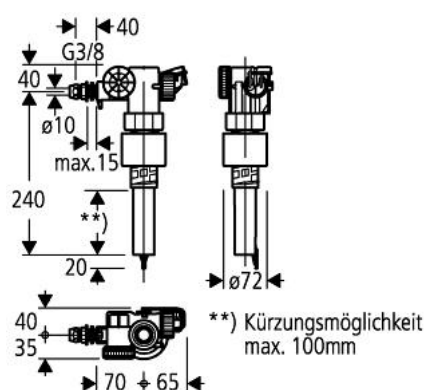


## 43 537 000 FILLING VALVE

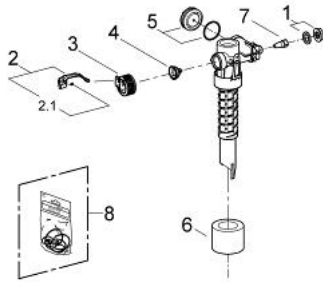


### PRODUCT DESCRIPTION

- for concealed flushing cisterns 6 l



## 43 537 000 **FILLING VALVE**



### **SPARE PARTS**, March 2013 – now

- 1: Dummy plug and escutcheon cap (Order-nr. 37125000)
- 2: Lever (Order-nr. 43734000)
- 2.1: Seal (Order-nr. 4377000M)
- 3: Valve head (Order-nr. 43536000)
- 4: Membrane (Order-nr. 4375800M)
- 5: Screw cap (Order-nr. 43735000)
- 6: Valve float, 5 pcs. (Order-nr. 4379100M)
- 7: Throttle (Order-nr. 42356000)
- 8: Set of seals (Order-nr. 43722000)\*

\*Special accessories